



GENAN INTAKE

Striving for
a sustainable future

WHY?

1 WE DO NOT BURN TYRES - WE RECYCLE THEM

Genan is the largest recycler of end-of-life tyres (ELTs) in the world. Tyres are granulated, and rubber, steel and textile are separated. The processing of rubber results in fractions of clean rubber in different particle sizes – from coarse granules to fine powders.

2 WHAT IS THE RUBBER USED FOR?

ELT rubber can be used for many different applications such as artificial turf pitches (granulate stabilises the straws and improves ball behaviour), asphalt (more durable roads), playgrounds (shock-absorbing surfaces) or in connection with the manufacture of new tyres.

3 THE CLEANER THE TYRES, THE BETTER THE RESULT!

All used tyres delivered to us are to be recycled; – and it is important that they are as clean as possible, so the rubber output can be used as an environment-friendly substitute for natural rubber. We can thus only use clean, “fresh” end-of-life tyres and rims from passenger cars, lorries and tractors. All other types of rubber, tyres or waste will be discarded and sent to a waste deposit. For this, the supplier will be charged. Suppliers may avoid such additional costs by following our terms for the delivery of tyres. Genan does not accept puncture-proof tyres; and if we find such tyres among the other tyres delivered to us, we will charge the supplier a fee per tyre as well as a fee for the extra sorting and for the disposal of such tyres.



TYRES & RIMS YES, PLEASE!



**PASSENGER CAR
TYRES, LORRY TYRES
OR TRACTOR TYRES
- WITH OR
WITHOUT RIMS**



**CLEAN
CONTAINERS**



WELLINGTONS NO, THANK YOU!



METAL BRACKETS
Tyres with e.g.
swing hangers



**BICYCLE OR
MOPED TYRES**

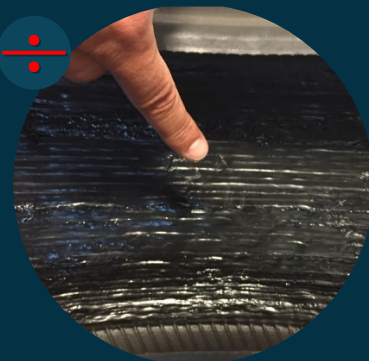


RUBBER BELTS
Caterpillar tracks
and conveyor belts

ALL RUBBER WASTE
- apart from passenger
car tyres, lorry tyres
or tractor tyres



**PUNCTURE-PROOF
TYRES**
- neither passenger car
tyres with thick, sticky
lining, nor bus or lorry
tyres with thin,
coloured sealant



ALGA
Old tyres
covered with alga



**DIRTY
CONTAINERS**



If in doubt, please call the logistics department
at your local Genan plant for guidance.
Find relevant contact details at www.genan.eu